

2021 Kindergarten Orientation

Monday, August 23rd, 2021

Juan Lagunas Soria School

Introductions

- Principal: Dr. Andres Santamaria
- Asst. Principal: Ms. Pam Cwiklo
- Counselor: Ms. Maritza Loya
- Kindergarten Teachers:
 - Ms. Stacy Ballas
 - Ms. Teresa Cortez-Ramirez
 - Ms. Diana Ornelas
 - Ms. Candi Vega
- Other guests:
 - Director, Educational Services: Dr. Aracely Fox
 - Literacy Intervention Teacher: Ms. Natalie McCallick

Welcome Back

- First Day of School: TOMORROW! Tuesday, August 24th, 2021
- Check website for important information
- Please stay home if sick
- Arrival (Front of School)
 - 8:15am - Front Gate opens for Breakfast (Cafeteria)
 - 8:30am - Kindergarten Gate opens to Kinder Playground
 - Parents not permitted onto campus at this time
 - Students will be given a sticker with Name, Grade, Teacher & Room #
 - Masks Required in all indoor spaces
 - Bring a refillable water bottle



W 5th St

W 5th St

W 5th St

W 5th St

W 5th St

Front of School Entrance (gate opens at 8:15am for K-8 students wanting breakfast)



Kindergarten Entrance (gate opens by 8:30am)



3101

Juan Lagunas Soria Elementary School

1st-8th Grades Entrance (gates open at 8:25am)



Dunkirk Dr

Dunkirk Dr

Dunkirk Dr

Dunkirk Dr

Dunkirk Dr

Dunkirk Dr

No

Juan Lagunas Soria School
 2021-22 Campus Map
 3101 Dunkirk Dr.
 Oxnard, CA 93035

Basketball Court

Bldg 8

Girls Locker Room	Boys Locker Room
-------------------	------------------

Nakamura Guillen

Basketball Court

Bldg 4 2nd Floor

RR	
Donner 8th 422	Doswell 6 SEI 421
Barajas 6 DLI 424	Martinez 6 DLI 423
Miranda 7th 426	Y Garcia 8th 425
E	Stairs

Bldg 4 1st Floor

RR	
Lefkovits 7/8th 402	Mosby 7/8th 401
Medina 7/8th 404	Sandoval 8th 403
Grolock 7th 406	Hess 7th 405
E	Stairs

Bldg 5

RR	PE Storage
----	------------

Field

Dunkirk Entrance

Stairs	Carrillo 5 DLI 343	Romero 4/5 DLI 341	RR	Lopez 4 SEI 339	Alvarez 3 SEI 337	Ramirez 3 SEI 335	Cornish Speech 335A
	Hays 5 SEI 342	Beckwith 5 SEI 340	RR E	Hartman Higgins RSP 346	Alvarado 4 DLI 338	Guzman 4 SEI 336	

Bldg 3 2nd Floor

Stairs	V Garcia 2 DLI 309	Preciado 2 DLI 307	RR	Manzano 3 DLI 305	Dominguez 3 DLI 303	Angel 1 DLI 301
	De Luna Diaz 1 DLI 308	Pope 6 SEI 306	RR E	Elrod 2 SEI 304	Beltran 2 SEI 302	Stairs

Flagpole Entrance

Bldg 3 1st Floor

Bldg 6

Peterson 1 SEI 206
Cortez 1 SEI 205
Ballas K SEI 204
Gomez-Vega K DLI 203
Cortez-Ramirez K DLI 202
Ornelas K DLI 201

Dunkirk Dr.

Kindergarten Playground

Kindergarten Entrance

Amphitheatre

LIT McCallick	Stud Store
Library James	RR
	ORC Nava
ASP - Cano RSP - Olachea	
MPR	Workroom
Kitchen Varela	Staff Lounge
	Health Ford

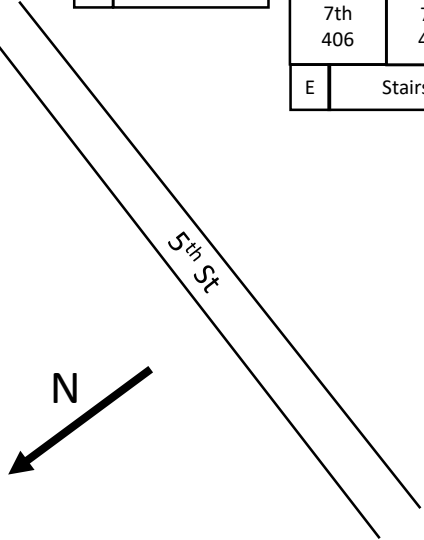
Bldg 1

Main Entrance

Bldg 7

Electrical Room

Parking Lot



Logistics

Following CDPH guidelines for K-12 schools:

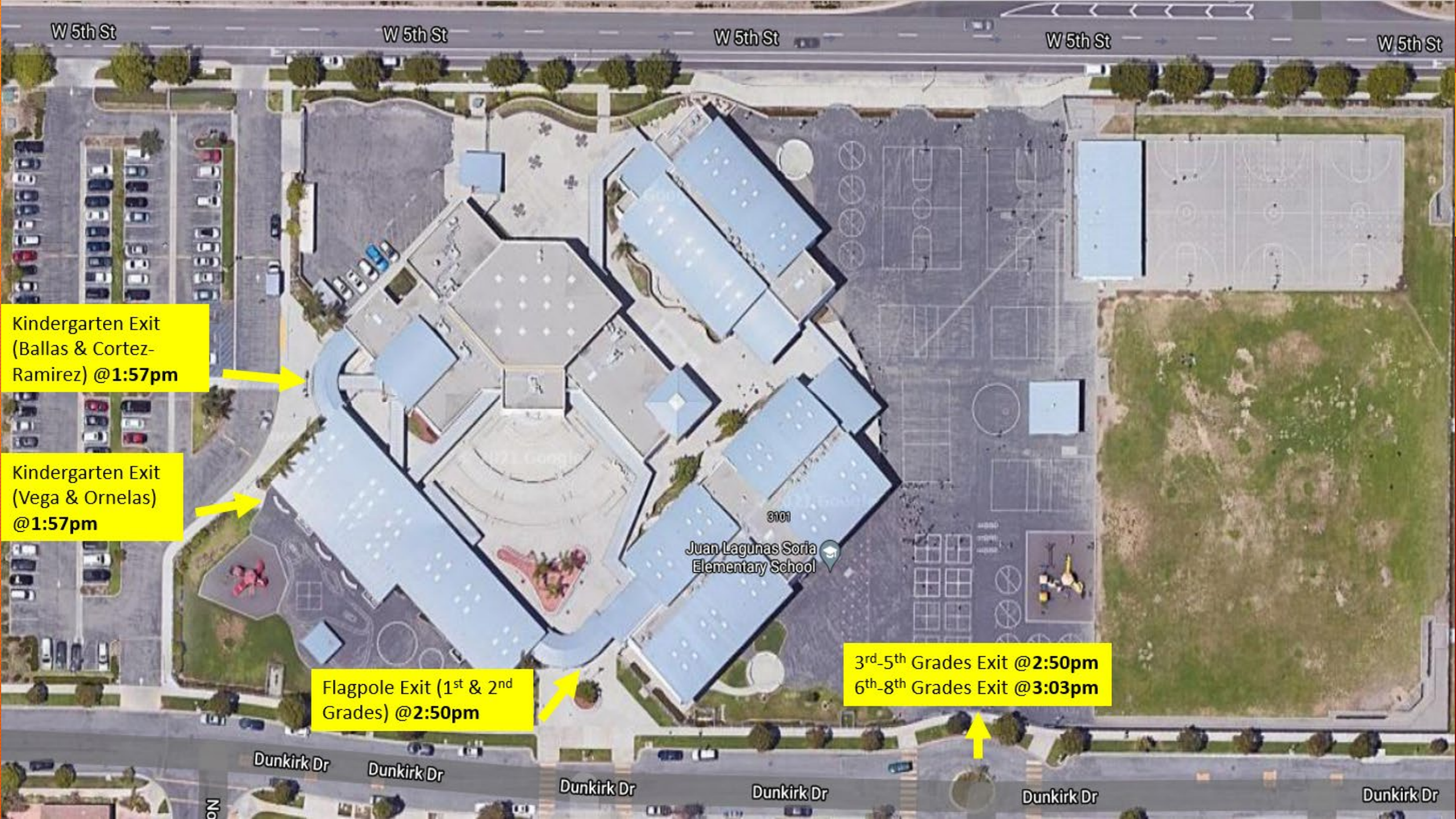
- Playground structure will be open
- Physical distancing no longer required
- Masks outdoors is optional
- Classrooms equipped with hand sanitizer stations and air purifiers
- Classrooms disinfected when a student exhibits symptoms

Technology:

- Kinder students will be receiving iPads this week (scheduled for Wednesday)
- We recommend backpacks to carry iPad & materials

Dismissal @ 1:57am

- Make arrangements with teachers for pick up
 - Ms. Stacy Ballas: sballas@oxnardsd.org
 - Ms. Teresa Cortez-Ramirez: tcortez-ramirez@oxnardsd.org
 - Ms. Diana Ornelas: dornelas@oxnardsd.org
 - Ms. Candi Vega: cvega@oxnardsd.org



W 5th St

W 5th St

W 5th St

W 5th St

W 5th St

Kindergarten Exit
(Ballas & Cortez-
Ramirez) @1:57pm

Kindergarten Exit
(Vega & Ornelas)
@1:57pm

Flagpole Exit (1st & 2nd
Grades) @2:50pm

3rd-5th Grades Exit @2:50pm
6th-8th Grades Exit @3:03pm

Dunkirk Dr

Dunkirk Dr

Dunkirk Dr

Dunkirk Dr

Dunkirk Dr

Dunkirk Dr

No

3101
Juan Lagunas Soria
Elementary School

Be in the know

- Establish communication with your child's teacher
- Attend Advisory Groups:
 - PTA (Parent-Teacher Association)
 - ELAC (English Learner Advisory Council)
 - School Site Council Meetings (school governance)

Kinder DLI Program

- 50/50 Model to accommodate 3 classes of Kinder DLI
- Ms. Cortez-Ramirez will be self-contained
- Ms. Vega (DLI English) & Ms. Ornelas (DLI Spanish) will partner
- Ms. Ballas will continue as SEI (English only)
- Alignment with other DLI programs within district

50/50 Dual Language Immersion Model

Kindergarten 50/50	First Grade 50/50	Second Grade 50/50	Third Grade 50/50	Fourth Grade 50/50	Fourth/Fifth Grade 50/50	Fifth Grade 50/50	Sixth Grade 40/60	Seventh Grade 20/80	Eighth Grade 20/80
Spanish	Spanish	Spanish	Spanish	Spanish	Spanish	Spanish	Spanish	Spanish	Spanish
SLA/SLD	SLA/SLD	SLA/SLD	SLA/SLD	SLA/SLD	SLA	SLA	Spanish Lit.	Spanish Lit & Comp	Spanish Lit & Comp
Social Studies	Science	Social Studies	Science	Social Studies	Science	Science	Social Studies		
Math Corner	Math Corner	Math Corner	Math Corner	Math Corner	Math Corner	Math Corner			
(minutes= 133.5)	(minutes=142.5)	(minutes=142.5)	(minutes=142.5)	(minutes=145)	(minutes=145)	(minutes=145)	(2 periods)	(1 period)	(1 period)
PE = 10 minutes	PE =20 minutes	PE =20 minutes	PE =20 minutes	PE =20 minutes	PE =20 minutes	PE =20 minutes	PE=1 period	PE=1 period	PE= 1 period
English	English	English	English	English	English	English	English	English	English
ELD/ELA	ELD/ELA	ELD/ELA	ELD/ELA	ELD/ELA	ELD/ELA	ELD/ELA	ELD/ELA	ELD/ELA	ELD/ELA
Math	Math	Math	Math	Math	Math	Math	Math	Math	Math
Science	Social Studies	Science	Social Studies	Science	Social Studies	Social Studies	Science	Social Studies	Social Studies
(minutes=133.5)	(minutes=142.5)	(minutes=142.5)	(minutes=142.5)	(minutes=145)	(minutes=145)	(minutes=145)	(3 periods)	Science (4 periods)	Science (4 periods)

Individual Teacher Orientation Zoom Information

Have a wonderful year!



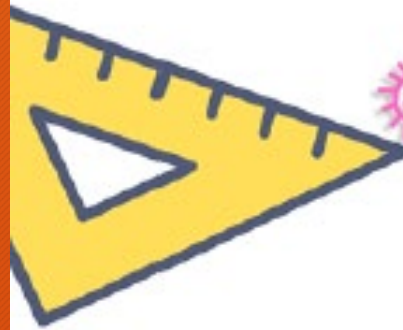
MRS. VEGA & MRS. ORNELAS



4:30 PM

ZOOM ID: 889-5119-5335

PASSCODE: 1234



MRS. CORTEZ-RAMIREZ



4:30 PM

ZOOM ID: 889-0626-2115

PASSCODE: 1212



MRS. BALLAS



4:30 PM

Meeting ID: 360 785 8815

Passcode: 111111

