

**OXNARD SCHOOL DISTRICT
SURVEY OF SCHOOL SITES AND BUILDING SIZE**

SCHOOL SITE: MCKINNA
ACREAGE: 10.0

DATE: 9-26-08

BUILDING NO.	SQUARE FT.	CONST.DATE	PERMANENT	PORTABLE	REMARKS
1	1733	1955	X		ADMIN
2	4506	1955	X		MULTIPURPOSE BLDG.
301	960	2000		X	DIVIDED/CLASSROOM
302	960	2000		X	CLASSROOM
303/304	2792	1955	X		CLASSROOMS (KDG.N.)
4	5433	1955	X		CLASSROOMS
5	5433	1955	X		CLASSROOMS
6	5492	1955	X		CLASSROOMS
7	N/A	N/A	X		ELEC. TRANSFORMER
8	2400	1967		X	STORAGE
901	1008	1959		X	CLASSROOM
902	1008	1959		X	STORAGE
1001	960	1996		X	CLASSROOM
1002	960	1996		X	CLASSROOM
1003	960	1996		X	COMPUTER LAB
1004	960	1996		X	CLASSROOM
1005	960	1989		X	CLASSROOM
1006	960	1989		X	CLASSROOM
1007	960	1989		X	CLASSROOM
1105-1007	480	2000		X	RESTROOM
1108	960	1998		X	CLASSROOM
1109	960	1998		X	CLASSROOM
1110	960	1998		X	CLASSROOM
12	2880	2000	X		LIBRARY
	44685				

OXNARD SCHOOL DISTRICT SURVEY OF SCHOOL SITES AND BUILDING SIZE

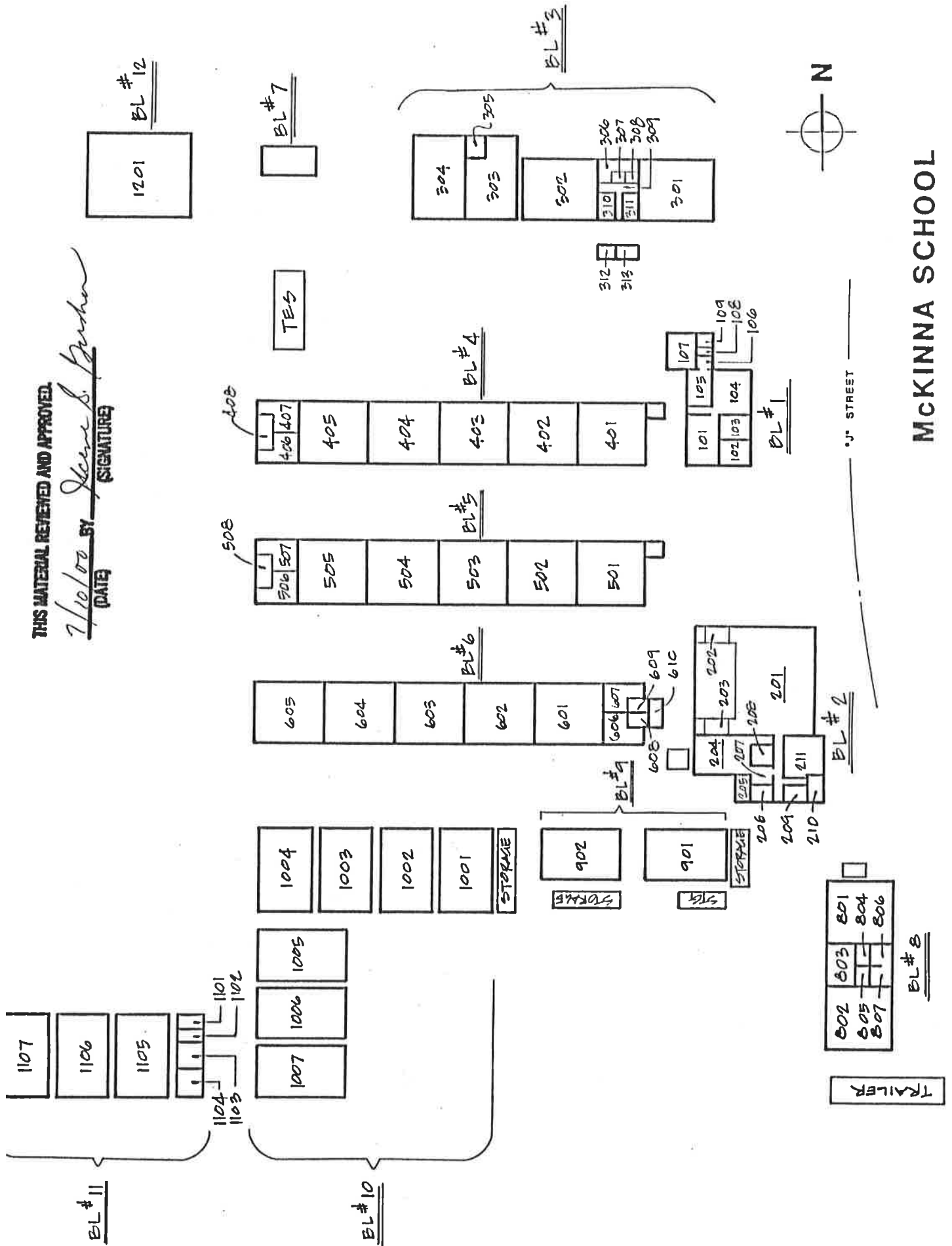
SCHOOL SITE: MCKINNA SCHOOL
 ACREAGE: 10.0
 SQ. FT. OF BLDGS.: 44,685

DATE PREPARED: 9-28-00
 REVISED 11-06-01

BUILDING NO.	SQ. FOOTAGE	CONST. DATE	TYPE OF CONSTRUCTION		REMARKS
			PERMANENT	PORTABLE	
1	1733	1955	X		ADMIN.
2	4506	1955	X		MULTIPURPOSE BLDG.
3	2792	1955	X		CLASSROOMS (KDGN.)
	960	2000		X	DIVIDED/CLASSROOM
	960	2000		X	CLASSROOM
4	5433	1955	X		CLASSROOMS
5	5433	1955	X		CLASSROOMS
6	5492	1955	X		CLASSROOMS
7	N/A	N/A	X		EL. EC. TRANSFORMER
8	2400	1967		X	STORAGE
9	1008	1959		X	STORAGE
	1008	1959		X	CLASSROOM
10	960	1996		X	CLASSROOM
	960	1996		X	CLASSROOM
	960	1996		X	CLASSROOM
	960	1996		X	CLASSROOM
	960	1989		X	CLASSROOM
	960	1989		X	CLASSROOM
	960	1989		X	CLASSROOM
	960	1998		X	CLASSROOM
11	960	1998		X	CLASSROOM
	960	1998		X	CLASSROOM
	960	1998		X	CLASSROOM
	480	2000		X	R/R
12	2880	2000	X		NEW LIBRARY

THIS MATERIAL REVIEWED AND APPROVED.

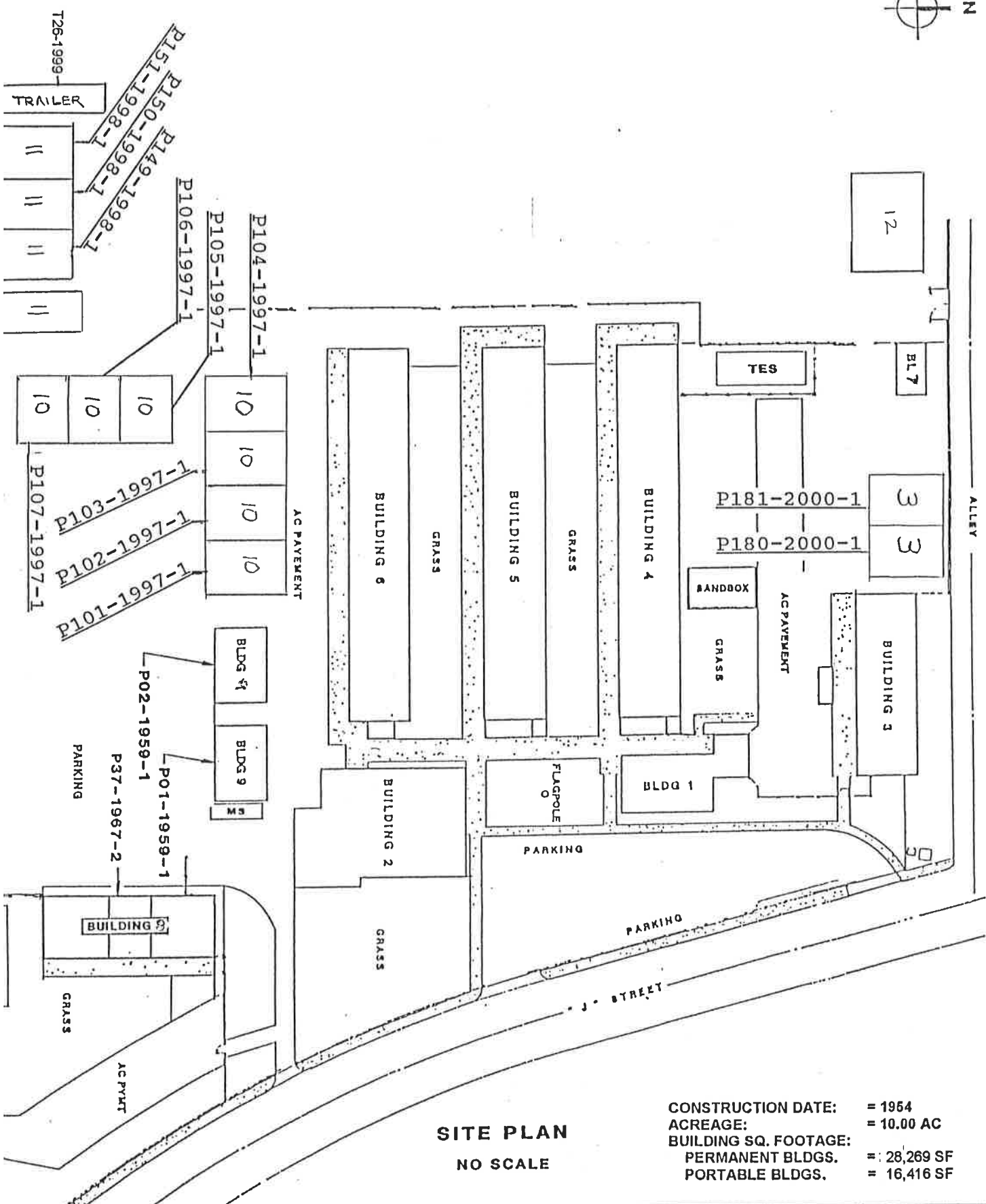
7/10/00 BY Gene S. Bush
(DATE) (SIGNATURE)



MCKINNA SCHOOL

"J" STREET



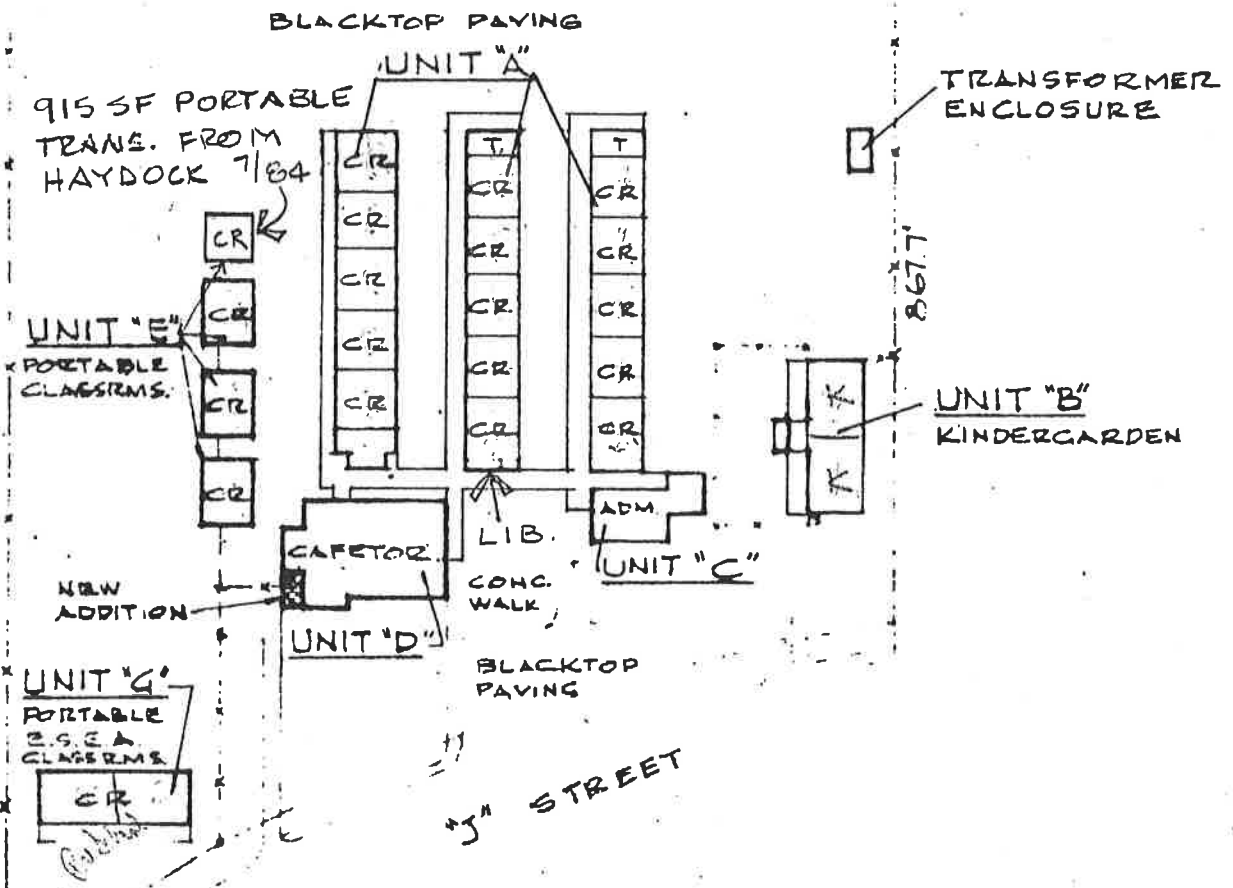


SITE PLAN
NO SCALE

CONSTRUCTION DATE: = 1954
 ACREAGE: = 10.00 AC
 BUILDING SQ. FOOTAGE: = 28,269 SF
 PORTABLE BLDGS. = 16,416 SF

1MAY93 SHOWN JA	OXNARD SCHOOL DISTRICT 1051 SOUTH A STREET OXNARD, CALIFORNIA	<p align="center">PLAN</p> <p align="center">McKINNA SCHOOL</p> <p align="center">REVISED 7-16-2000</p>	DRAWING No. <p align="center">P 112</p> SHEET <u>1</u> of <u>1</u>
-----------------------	--	---	--

462.17
 Dennis McKinna School
 Oxnard Elementary School District
 Total Acreage: 10.0



UNIT	CONSTRUCTION DATE	SQUARE FOOTAGE
Classrooms - "A"	1954	19,956
Kindergarden - "B"	1954	3,333
Administration - "C"	1954	1,767
Cafetorium - "D"	1954	4,337
Portable Classrooms - "E"	1959 REMOVED 1971	3,024
Portable Classroom - "F"	1964 REMOVED 1973	
Portable Classrooms - "G"	1967	2,720
Transformer Enclosure	NON-CHARGEABLE	
GROSS TOTAL FOOTAGE		35,137

REVISED 7/23/82

Above is measured in accordance with Article 2022, Subchapter 8, Title 5, California Administration Code

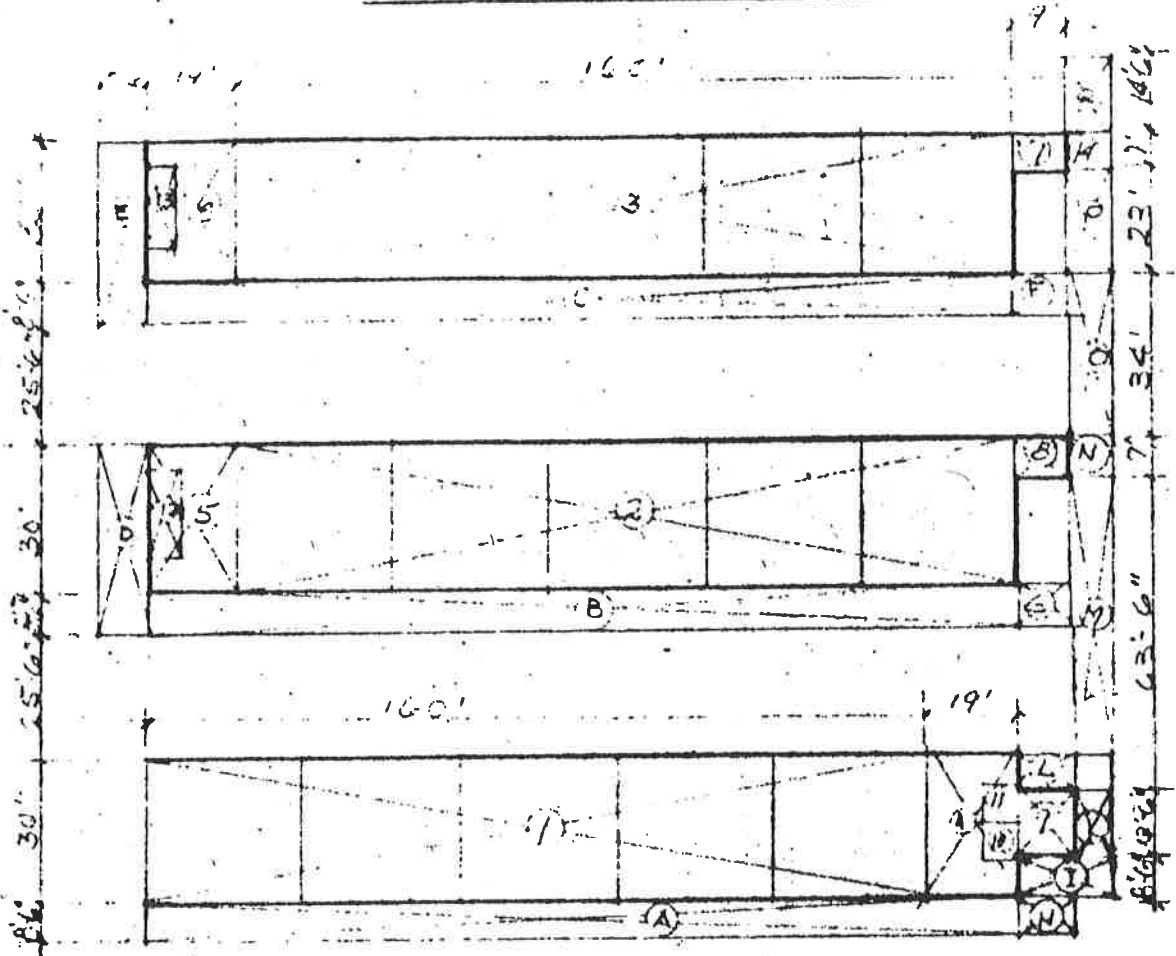
Date: 9 November 1987
 Sheet 1 of 4 Sheets
 Bureau of School Planning
 Department of Education

Architect

Project: Dennis McKinna School
 Oxnard Elementary School District
 Address: Lot 1 So. "J" Street, Oxnard, California

Existing (1-A) ✓
 Basic Plans (2-A)
 Final Plans (3-A)

CLASSROOM UNIT "A"



AREA PLAN

SCALE 1" = 40'

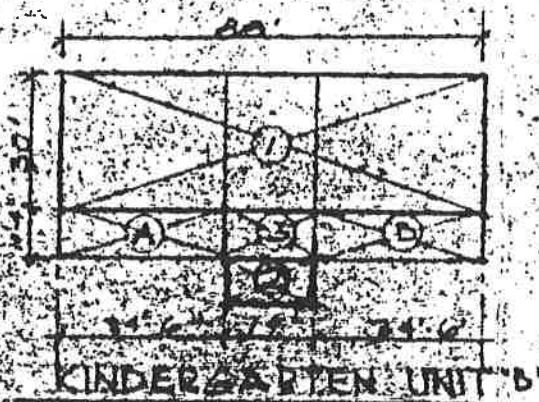
1 2 3	Classrooms	160' x 30' x 3	14,400
4 5 6	Toilets	19' x 30' - 16'-6" x 7' x 3	1,364
7 8	Heater	9' x 7' x 2	126
9	Teachers	9' x 13'-6"	122
10	Heater	8'-3" x 7'	58
11	Toilet	8'-3" x 7'	58
12	Janitor	16'-6" x 7'	116
13	Storage	16'-6" x 7'	116
14	Corridor	7'-9" x 7'	54
A	Shelter	179' x 8'-6" + 2 x 3	2,282
B	Shelter	38'-6" x 8'-6" + 2 x 2	327
C	"	8'-3" x 9'-3" + 2 x 2	76
D	"	9'-3" x 8'-0" + 2	37
E	"	17'-6" x 8'-6" + 2	74
F	"	3'-6" x 7'-0" + 2	12
G	"	13'-6" x 8'-6" + 2	57
H	"	8'-9" x 8'-3" + 2	36
I	"	63'-6" x 9'-3" + 2	294
J	"	8'-6" x 7'-0" + 2	30
K	"	34'-0" x 9'-3" + 2	157
L	"	23'-0" x 8'-6" + 2	98
M	"	14'-6" x 8'-6" + 2	62
N	"		
O	"		
P	"		
Q	"		
		TOTAL AREA UNIT "A"	19,956 sq. ft.

Above is measured in accordance with Article 2022
 Subchapter 9, Title 5, California Administration Code
 , Architect

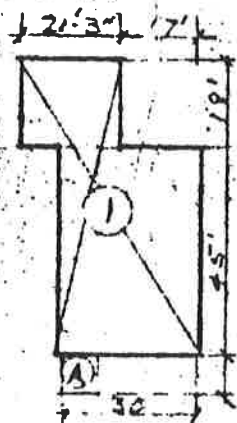
Date: 3 November
 Sheet 2 of 4 Sheets
 Office of School Pl
 Department of Edu

Project: Dennis McKinna School
 and Elementary School District
 Address: 1611 So. "J" Street, Oxnard, California

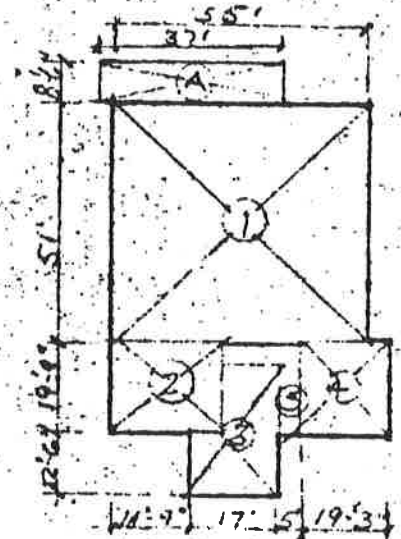
Existing (1-A) ✓
 Basic Plans (2-A)
 Final Plans (3-A)



KINDERGARTEN UNIT "B"



ADMINIST. UNIT "C"



CAFETORIUM UNIT "D"

AREA PLAN

SCALE 1" = 40'

Unit "B"

1 Kindergarten	88' x 30'	
2 Stair and Janitor	19' x 3'	
3 Corridor	19' x 0'-9"	
4 Shelter	34'-6" x 10'-4" + 2	
5 Shelter	34'-6" x 10'-4" + 2	

2,640
152
185
178
178

TOTAL AREA OF UNIT "B"

3,333 sq. ft.

Unit "C"

1 Administration	45' x 30' + 21'-3" x 18'	1,733
A Shelter	8'-6" x 8' + 2	34

TOTAL AREA UNIT "C"

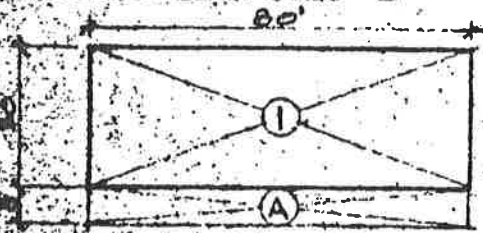
1,767 sq. ft.

Unit "D"

1 Multi-purpose	55' x 51'	2,805
2 Kitchen	19'-9" x 25'-6"	504
3 Cov. & Dishwash	6'-9" x 12'-6" + 28' x 10'-3"	370
4 Teaching dining	19'-3" x 19'-9"	380
5 Hall	5' x 15'-6" + 4'-3" x 10'-3"	121
A Shelter	37' x 8'-6" + 2	157

TOTAL AREA UNIT "D"

4,337



UNIT "G"

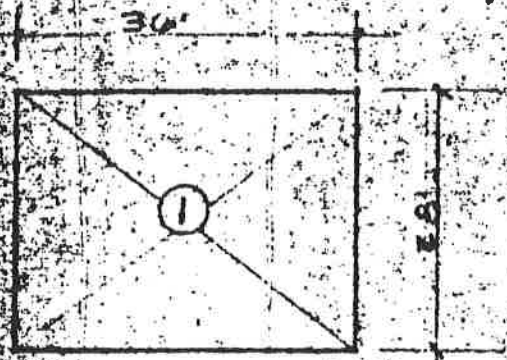
1 CLASSROOMS	80' x 30' = 2,400 S.F.
A SHELTER	80' x 8' = 2 = 320 S.F.
TOTAL AREA UNIT "G"	= 2,720 S.F.

ELEMENTARY SECONDARY
 EDUCATIONAL ACT
 PORTABLE CLASSROOMS
 UNIT "G"

REV. 19 NOV. 1967
 REV. 24 MAR 64

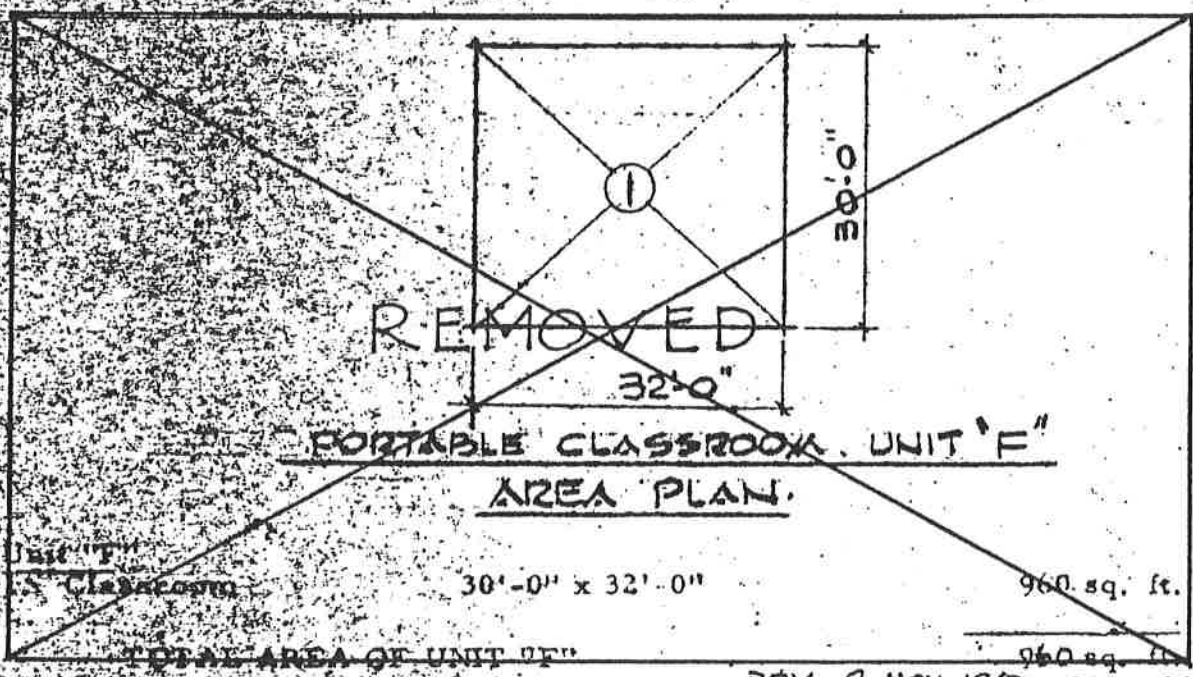
1. Elementary School
 2. Elementary School District
 3. 1511 So. "J" Street, Oxnard, California

Existing (1-A) ✓
 Basic Plans (2-A) ✓
 Final Plans (3-A) ✓



PORTABLE CLASSROOM UNIT "E"
 SCALE 1" = 20'
 (2 SUCH BUILT)
AREA PLAN

Unit	Dimensions	Area
1 Classroom	28'-0" x 36'-0" x 2	3,024 sq. ft.
TOTAL AREA OF UNIT "E"		2+ sq. ft.



PORTABLE CLASSROOM UNIT "F"
AREA PLAN

Unit	Dimensions	Area
1 Classroom	30'-0" x 32'-0"	960 sq. ft.
TOTAL AREA OF UNIT "F"		960 sq. ft.

REVISED 7/23/62
 REV. 9 NOV. 1967 Rev 18 Feb 1964

As measured in accordance with Article 2022
 State of California Administration Code
 Architect

Date: 3 November 1961
 Sheet 4 of 4 Sheets
 Office of School Planning
 Department of Education