



OXNARD SCHOOL DISTRICT

1051 South "A" Street ♦ Oxnard, California 93030 ♦ 805/385-1501 ♦ www.oxnardsd.org

PUBLIC NOTICE

Oxnard School District Trustee Area Redistricting

PLEASE TAKE NOTICE that the Oxnard School District intends to conduct a public hearing on Trustee Area Redistricting at a regular meeting of the Board of Trustees on January 19, 2022 at 7:00 pm, or as soon thereafter as this matter may be heard, in the Board Room of the Educational Services Center located at 1051 South A Street, Oxnard, CA 93030. The purpose of the Hearing will be to review and receive public input on two options for Trustee Area Redistricting (attached).

PLEASE TAKE FURTHER NOTICE that following the public hearing, revisions will be brought back for review and input at the February 2, 2022 Board meeting. The final revisions will be presented for the Board's adoption at the February 16, 2022 Board meeting.

The proposed options for revisions to the Trustee area maps are also available on the district's website at www.oxnardsd.org, or at the District's administrative office during normal business hours. The District's administrative office is located at 1051 South A Street, Oxnard, CA 93030.

Information concerning this matter is available from the office of the Superintendent at (805)385-1501, ext. 2034.

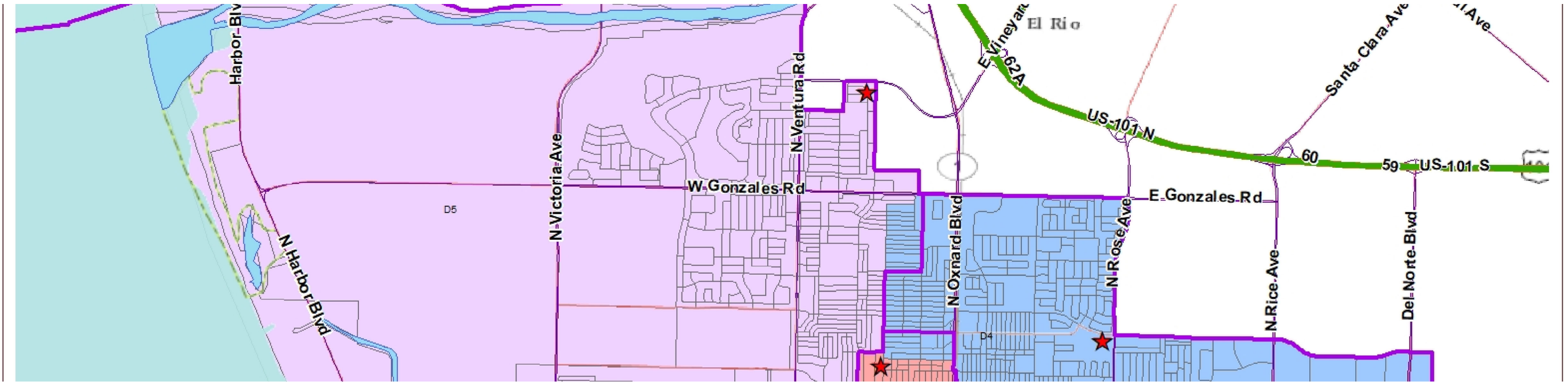
CONCEPTUAL TRUSTEE AREAS - SCENARIO 1

Total Population:	125,026	Ideal Population:	25,005	Variance:	8.9%
--------------------------	----------------	--------------------------	---------------	------------------	-------------

Total Population (2020 Census)					
	Trustee Area 1	Trustee Area 2	Trustee Area 3	Trustee Area 4	Trustee Area 5
Population	24,916	25,045	25,165	23,839	26,061
Population Variance	-89	40	160	-1,166	1,056
	-0.4%	0.2%	0.6%	-4.7%	4.2%
Hispanic/Latino	46.7%	85.9%	85.4%	83.6%	70.5%
White	39.2%	6.8%	6.4%	5.4%	17.3%
Black/ African American	3.0%	2.1%	1.6%	1.4%	3.1%
American Indian/ Alaska Native	0.4%	0.2%	0.2%	0.2%	0.2%
Asian	6.4%	3.2%	4.8%	7.9%	6.0%
Native Hawaiian/ Other Pacific Islander	0.3%	0.3%	0.2%	0.2%	0.3%
Other	0.6%	0.3%	0.3%	0.2%	0.6%
Two or More Races	3.5%	1.4%	1.2%	1.1%	2.1%

Population 18 and Over (2020 Census)					
	Trustee Area 1	Trustee Area 2	Trustee Area 3	Trustee Area 4	Trustee Area 5
Population	20,340	17,932	18,127	17,174	19,867
Hispanic/Latino	40.8%	83.3%	82.6%	81.3%	65.9%
White	44.6%	8.2%	7.9%	6.4%	20.5%
Black/ African American	3.2%	2.4%	1.8%	1.7%	3.5%
American Indian/ Alaska Native	0.4%	0.2%	0.2%	0.2%	0.3%
Asian	7.0%	3.9%	5.8%	9.0%	6.9%
Native Hawaiian/ Other Pacific Islander	0.3%	0.3%	0.2%	0.2%	0.3%
Other	0.6%	0.3%	0.3%	0.2%	0.6%
Two or More Races	3.2%	1.4%	1.2%	0.9%	2.0%

Citizens by Voting Age Population Estimate (2015-2019)					
	Trustee Area 1	Trustee Area 2	Trustee Area 3	Trustee Area 4	Trustee Area 5
Population	18,385	11,927	11,045	11,344	16,354
Hispanic/Latino	38.1%	72.4%	77.9%	72.0%	57.3%
White	48.5%	14.2%	10.6%	13.7%	26.6%
Black/ African American	3.8%	5.4%	2.7%	2.1%	4.5%
American Indian/ Alaska Native	0.1%	0.2%	0.0%	0.8%	0.3%
Asian	6.1%	6.6%	7.8%	9.2%	8.8%
Native Hawaiian/ Other Pacific Islander	0.4%	0.3%	0.1%	0.6%	0.1%
Other	0.0%	0.0%	0.0%	0.0%	0.0%
Two or More Races	3.0%	0.9%	0.9%	1.5%	2.3%



CONCEPTUAL TRUSTEE AREAS - SCENARIO 2

Total Population:	125,026	Ideal Population:	25,005	Variance:	2.1%
--------------------------	----------------	--------------------------	---------------	------------------	-------------

Total Population (2020 Census)					
	Trustee Area 1	Trustee Area 2	Trustee Area 3	Trustee Area 4	Trustee Area 5
Population	24,861	25,100	25,165	24,689	25,211
Population Variance	-144	95	160	-316	206
	-0.6%	0.4%	0.6%	-1.3%	0.8%
Hispanic/Latino	46.9%	85.5%	85.4%	83.0%	70.6%
White	39.1%	6.9%	6.4%	6.0%	17.1%
Black/ African American	2.9%	2.2%	1.6%	1.4%	3.1%
American Indian/ Alaska Native	0.4%	0.2%	0.2%	0.2%	0.2%
Asian	6.3%	3.2%	4.8%	7.8%	6.1%
Native Hawaiian/ Other Pacific Islander	0.3%	0.3%	0.2%	0.2%	0.3%
Other	0.5%	0.3%	0.3%	0.3%	0.5%
Two or More Races	3.5%	1.4%	1.2%	1.2%	2.1%

Population 18 and Over (2020 Census)					
	Trustee Area 1	Trustee Area 2	Trustee Area 3	Trustee Area 4	Trustee Area 5
Population	20,260	18,012	18,127	17,871	19,170
Hispanic/Latino	41.1%	82.8%	82.6%	80.6%	66.0%
White	44.6%	8.4%	7.9%	7.2%	20.3%
Black/ African American	3.1%	2.5%	1.8%	1.7%	3.5%
American Indian/ Alaska Native	0.4%	0.2%	0.2%	0.2%	0.3%
Asian	6.9%	4.0%	5.8%	8.8%	7.1%
Native Hawaiian/ Other Pacific Islander	0.3%	0.3%	0.2%	0.2%	0.3%
Other	0.6%	0.3%	0.3%	0.3%	0.6%
Two or More Races	3.1%	1.4%	1.2%	1.0%	2.0%

Citizens by Voting Age Population Estimate (2015-2019)					
	Trustee Area 1	Trustee Area 2	Trustee Area 3	Trustee Area 4	Trustee Area 5
Population	18,125	12,187	11,045	12,009	15,689
Hispanic/Latino	38.0%	71.9%	77.9%	70.6%	57.8%
White	48.8%	14.4%	10.6%	15.8%	25.6%
Black/ African American	3.8%	5.3%	2.7%	2.0%	4.7%
American Indian/ Alaska Native	0.1%	0.2%	0.0%	0.8%	0.3%
Asian	5.9%	6.9%	7.8%	8.7%	9.2%
Native Hawaiian/ Other Pacific Islander	0.4%	0.3%	0.1%	0.6%	0.1%
Other	0.0%	0.0%	0.0%	0.0%	0.0%
Two or More Races	2.9%	1.1%	0.9%	1.5%	2.4%